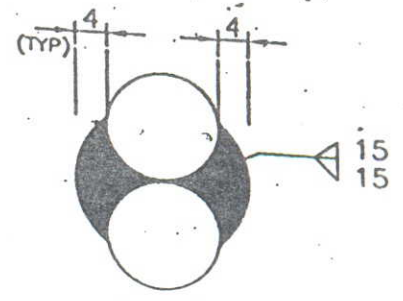
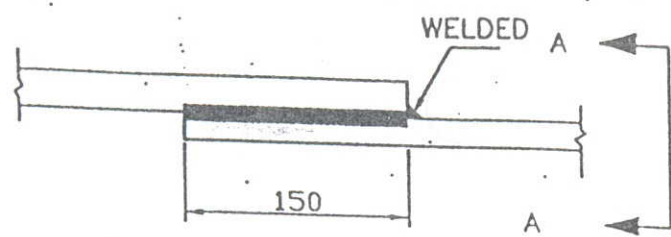


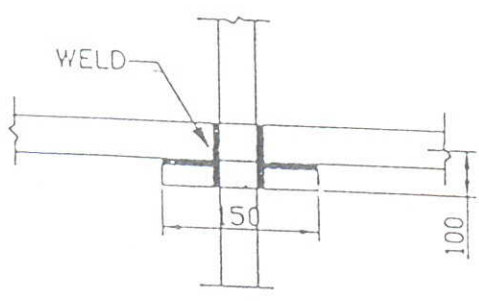
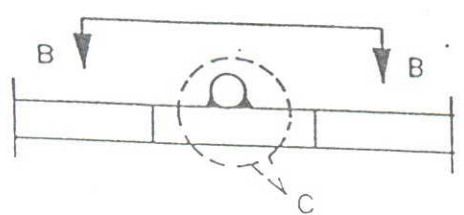
ROD TO ROD

1. STRAIGHT LAP JOINT/RISER

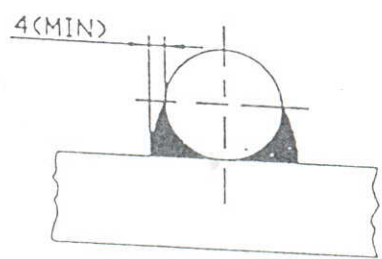


VIEW A-A

2. RIGHT ANGLED JOINT

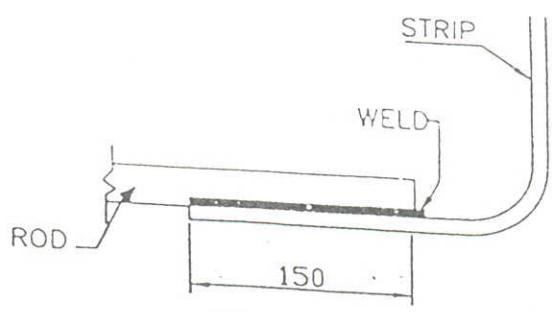
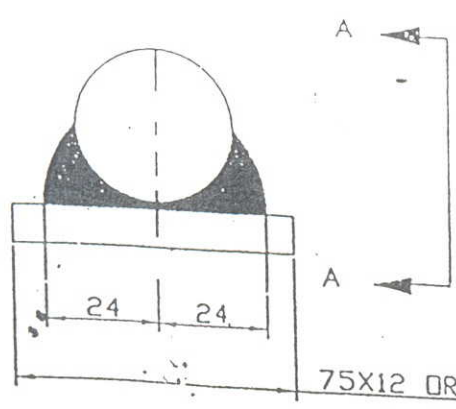


VIEW B-B

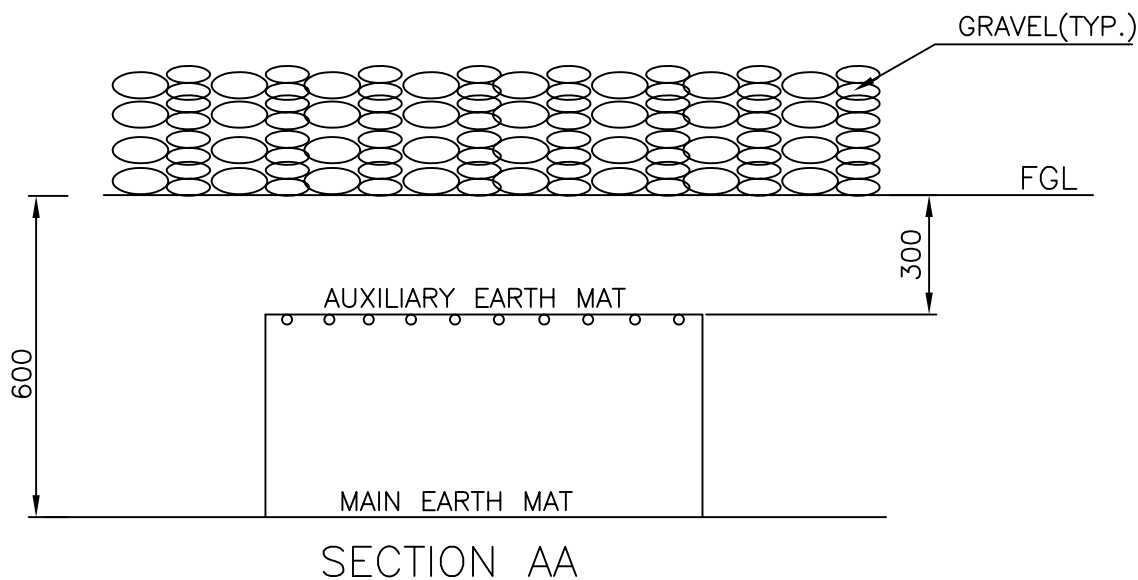
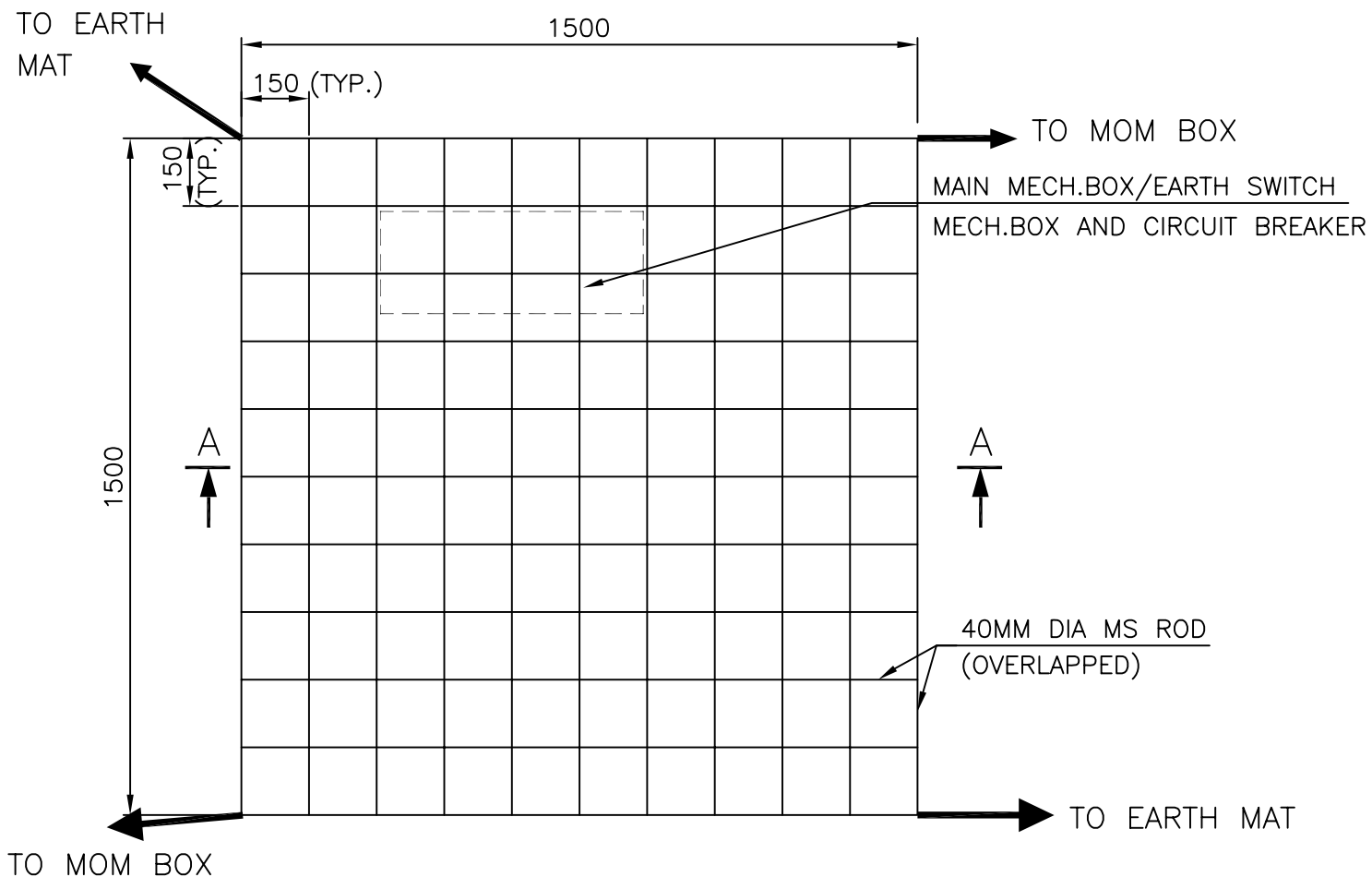


VIEW C

3. ROD TO STRIP



VIEW A-A



NOTE:

AUX. EARTH MAT SHALL BE SO POSITIONED THAT THE FOOT OF THE OPERATOR ALWAYS LIE OVER THE AUX. EARTH MAT AREA WHILE ATTENDING/OPERATING THE MECH. BOX.



EQUIPMENT EARTHING DETAILS
AUXILIARY EARTH MAT FOR ISOLATOR MAIN MECH.,E/S MECH.
AND CIRCUIT BREAKER CONTROL CUBICLE

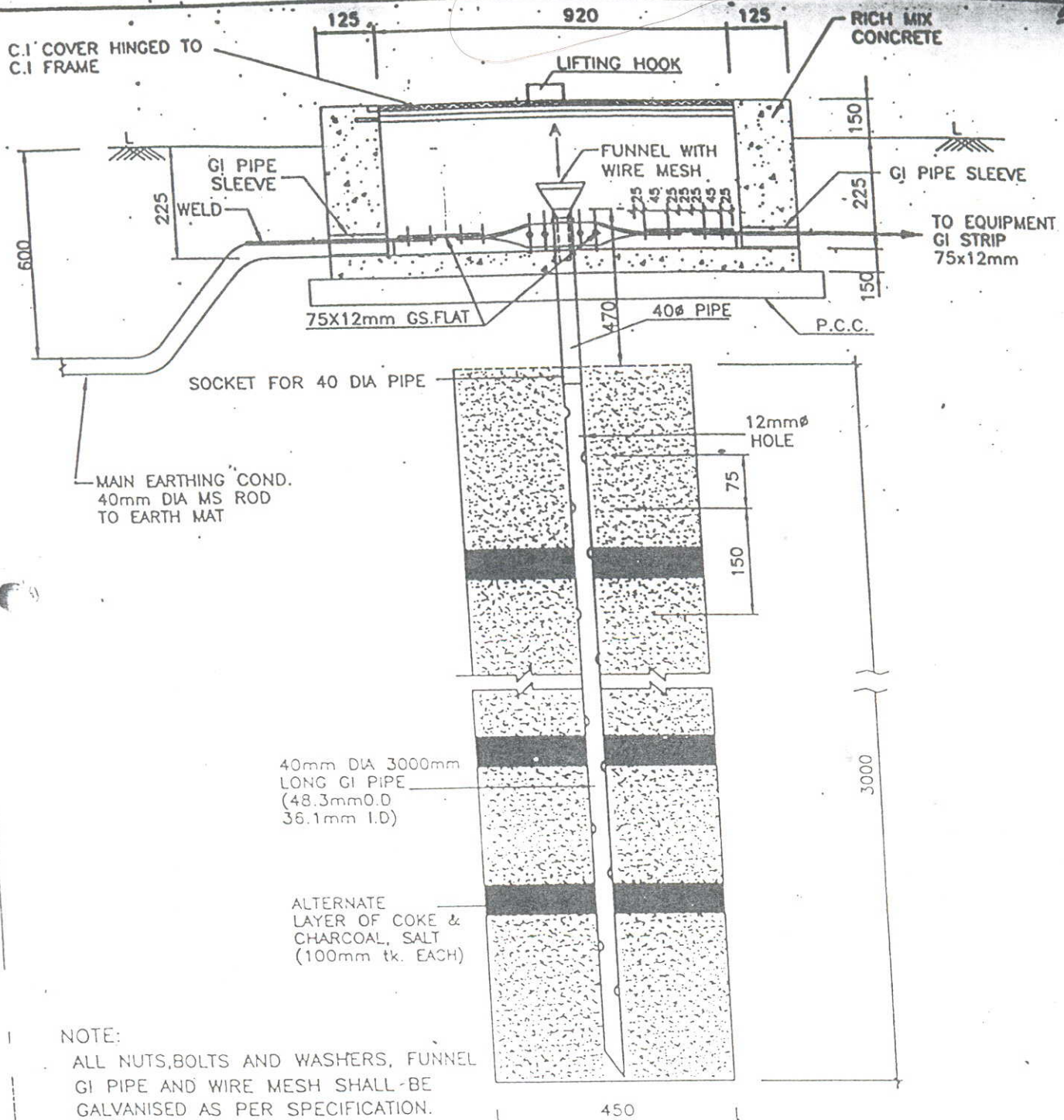
COMPU. DRG. REF.

Report No.

TB 4 333 509 004

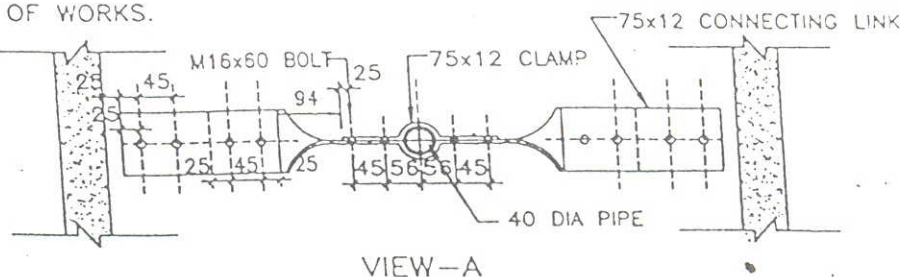
SHEET No.

17



NOTE:

1. ALL NUTS, BOLTS AND WASHERS, FUNNEL GI PIPE AND WIRE MESH SHALL BE GALVANISED AS PER SPECIFICATION.
2. PIPE SLEEVE ENDS SHALL BE SEALED AFTER COMPLETION OF WORKS.
3. FUNNEL SHALL BE SECURELY HELD TO THE PIPE.



**EQUIPMENT-EARTHING DETAILS
DETAILS OF PIPE EARTH ELECTRODE
IN TREATED EARTH PIT (ET)**



COMPUTER REF. NO.

DRG. No.

TB-STD-316-PIPE Electrode

REV. 00

SHEET No. 00



SHEET No.